

SALISBURY & DISTRICT HISTORICAL SOCIETY INC. NEWSLETTER

Celebrating over 40 years of "keeping alive the history of Salisbury"



MARCH 2023



Salisbury & District Historical Society Inc.
3 Ann St Salisbury

Museum Open— 2pm-4pm on the 1st Sunday of the month

Water Wheel Open—2pm-4pm on the 1st and 3rd Sundays of the month

These times may vary due to long weekends and school holidays.

The Museum and Water Wheel visits can be arranged at other times,
please contact the President on 0408086545

2023 General Meetings and Activities

February 18th Saturday 9:30am	<i>Clean up and Sausage Sizzle</i>
March 15th Wed 7:00pm	<i>Justin Carmody Gino Capogreco Salisbury Football Club</i>
April 19th Wed 7:00pm	<i>Colin Seymour Tramway Museum St Kilda</i>
May 14th Sunday 1:30pm	<i>History Month Salisbury walk</i>
June 14th Wed 7:00pm	<i>Terry Sloan Penfield & WRE</i>
August 16th Wed 7:00pm	<i>Michelle Toft Burnside History Officer</i>
October 18th Wed 7:00pm	<i>AGM Show & Tell</i>
December 3rd Sunday 12:30pm	<i>Christmas Luncheon</i>
 <i>Day Trip and luncheon to Adelaide's Old Goal</i>	
<i>September but date to be advised</i>	

President Report—Des Brown

Greetings - as we start a new year, I refer you to our 2023 Program as we look forward to an interesting selection of speakers

Already this year we have had 3 community groups wanting to visit our Museums namely the Salisbury Rotary Club, WEA and Kidman Park Probus.

Recently we have had several requests from owners of old homes in our District who are keen to know the background history of their homes. It's encouraging to know that people are interested in this detail but unfortunately, as a Society, we have very little detail of home approvals and their previous owners.

We were pleased to accept some old historic photos of Parafield Airport from Reg and Helen Driver; the complete collection has been included on our Flickr database, and some have been included in this edition.

Again this year we have enrolled with the SA History Festival to hold a historic walk around old Salisbury on May 14th. If you have not yet participated in this event, I encourage you to do so (bookings required).

At our last committee meeting on 9 February, I requested some leave as President due to health reasons. Simon Hales, as Deputy President, will take over my role with the assistance of several committee members from February – April.

President's Stop Press — Register Wednesday 17th April 1912 Salisbury Recreation Park— The Opening Ceremony

" Saturday was a notable day in the history of Salisbury, for it marked the opening of the new recreation park. In the early day a block of land was reserved 3 miles from the town. .. Owing to its unsuitableness steps were taken.. By the District Council of Yatala North ... to purchase a more suitable block.. At a public meeting it was decided to recommend the council purchase 15 acres of land from Mr H W Jago, about 300 yards from the railway station. A splendid lot of healthy sugar gums bound three sides of the property. The park which is vested in the district council and controlled by an association .. of seven members. Two asphalt tennis courts and a cement cricket pitch have been laid and considerable expense and labour have been involved in grading and levelling the park for football and other sports. Pipes are now on the ground for water from Barossa. The opening fixture on Saturday was a decided success, thanks to the united efforts of willing workers of both sexes. A large number of people were present from all over the district. Mr E H Coombe (former senior member for Barossa) performed the opening ceremony. A capital programme of athletic and bicycle sports were submitted. The Gawler Brass Band rendered selection. Luncheon and afternoon tea were provided by a committee of ladies."

Recreation Park

In May 1910 the Yatala North Council purchased 15 acres of section 2231 adjacent to the railway line from Henry Jago, 33 pounds per acre to be used as a Recreation Park. A right of way was also acquired alongside the railway line to gain access from Park Tce.

Football and Cricket had previously been played on various private properties depending on the generosity of the owners.

A great deal of voluntary work was put into establishing the area as a suitable venue for various sports and recreation.



*Volunteer Workers
Recreation Park
1910*

A public meeting in Feb 1912 was held to form a Gymnasium Club. Rev W Noll from the Congregational Church chaired the meeting; he had already recruited a group of young men sufficient to form the Club.

Mr E J Brown secretary of the Recreation Park also became the first secretary of the new Gymnasium Club and took a prominent part in the building of the Pavilion which was opened in 1913 free of debt. This building provided a Gym Hall and a covered tiered seating for 75 spectators to watch events held on the oval. The building was built by Mr C Fletcher at a cost of 137 pounds and 17pence. Fund raising was mainly through concerts and sports days.



*Opening of new Pavilion &
Gymnasium Club 6th Sept 1913
by Hon S Rudall MP
it served the community well till
1968 when it was replaced with
a new grand stand and changing
rooms. A lean-to was later built
on the southern end for
2 coppers which provided hot
water*



1916 Aust Day Procession



1968 new grandstand

The Park also accommodated the Croquet Club. The Bowling Club followed in 1930 adjacent to the Croquet Club at the northern end.

A Tennis Club was formed and two courts were laid on the eastern side adjacent to the Croquet Club, these courts also accommodated a Basketball Club.

In 1931 the Boy Scouts made use of the Pavilion on a Saturday morning.

In the 1940s a Motor Cycle Club put down a track and held regular events.

In 1948, what had been Eleventh St in the Cabin Homes area, was extended south to service factories and the south end of the Recreation Park. The road was named Brown Tce in honour of the Town Clerk E J Brown who had played a prominent part in the development of the Recreation Park and the sporting bodies using it.

A further strip of land was purchased from R Taylor between Brown Tc and the eastern boundary; this became an area for children's' playground and a general park.

The Park over the years has accommodated Australia Day events, School Sports Day , annual picnics.

During the 1920s and 30s the RSL ran an annual "Horses In Action" event.

In 1936 to celebrate the Centenary of South Australia the Salisbury School held a sports day on the oval and procession of bands and floats were the highlight of the celebrations.



1940 c



*Youth Centre
St Jays
Built 1962*

By 1962 a new Youth Centre had been built adjacent to the Recreation Park on the corner of Brown Tce and Orange Ave. This was opened on 21st December 1962 and the Gymnasium Club made use of the new facilities. Over the years the Youth Centre was extended and catered for a multitude of indoor sports; it became know as St Jays Youth Centre.

Unfortunately, the facility needed extensive repairs which were not economical to undertake so it was decided by the City of Salisbury Council that St Jays Youth Centre was to be demolished in 2017.

We owe a lot to our forefathers, who back in 1910, had the foresight that lead to the purchasing of this land, in addition to the many volunteers who helped to establish the Recreation Park as a recreational area to be enjoyed by so many different sporting and community groups in our District. Salisbury oval has always been an outstanding facility with an excellent surface for football and cricket matches.



Compiled by D R Brown

Salisbury Mounted Infantry



*Sgt. J Coker, H Bussenschutt, J Heier, J Wiggins, Sgt. A Winzor, A J Harvey,
Leuit. E Brooks, H White, J Willison, A Pedlar, H Beer, W Winzor, W Goodman*

We published this photo in our last Newsletter Dec 2022.

Its such a great photo we thought we should see if we could find any additional details other than it's around 1890s and taken on Commercial Rd intersection of Johns St with Whittlesea's old butcher's shop in the background.

Military Items SA Register 22nd June 1894

“Recently a mounted infantry corps has been formed at Salisbury, under the command of Lieutenant Dr Brookes. The men are fine, hardy fellows, excellent horsemen, and full of enthusiasm. Brigade-Major Stuart returned from Smithfield on Thursday, after inspecting the Gawler and Salisbury Companies at Smithfield, where they had met for combined drills. The men looked fit for any work, and were mounted on hardy active horses. They acquitted themselves well, and in addition to the ordinary drill were made to fire the *feu-de-joie*, to accustom their steeds to the noise of firearms. The *feu-de-joie* sounds so much like the tearing of a very tough sheet that it is enough to startle any animal not a human. Two well-known enthusiasts in rifle matters, Messrs J Roberts and Smith, members of the Gawler Company, entertained the two companies at dinner.”

feu-de-joie is a rifle salute fired by soldiers on a ceremonial occasion, each soldier firing in succession along the ranks to make a continuous sound.

Compiled by D R Brown

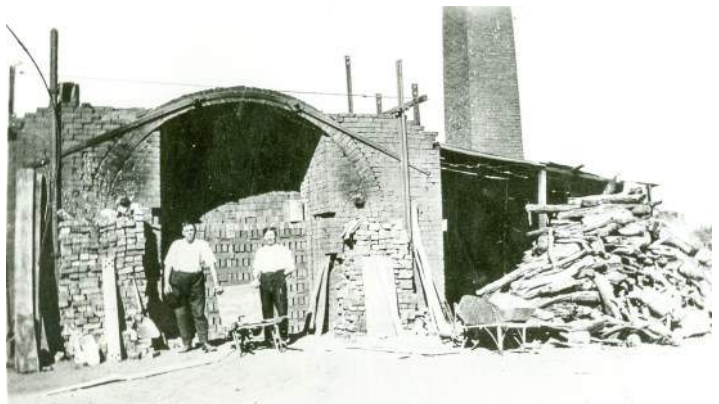
Salisbury Bricks

After John Harvey established his town in 1848 it was soon discovered that the ground underneath Salisbury was heavy clay. By 1849 John Pickering and Joseph Miller formed a partnership and purchased allotments 75, 76 and 53 which extended through from Mary Street to Ann Street. They built a kiln on the Ann Street end of the property and began mining clay from the remainder. They manufactured bricks and roofing, and floor tiles. At that time claimed that they were the only ones in South Australia producing tiles. They were the first to manufacture bricks in Salisbury but they were soon followed by others entering the industry. After about five years they appear to have made enough money to purchase farm land up north and sold out to Samuel Edwards. Bricks were selling at 28/- per thousand, including delivery.

At the beginning of 1855 John French and Robert Roberts purchased from Joseph Broadstock the land between James Street and James Lane (now Sexton Car Park), and set about brick making. They mined the clay from the north west corner of the property but it is uncertain where their kiln was located or how long it operated for but by the excavation that remained it must have operated for at least a decade or so. The excavation was about six metres deep and provided sufficient area for a small orange orchard.

John Vardon commenced brickworks on the property now occupied by Parabanks Car Park on Commercial Road. His kiln was on the river flat near the river and he mined the clay facing into the higher ground towards John Street. In 1868 the operation and the property were purchased by brothers William and John Sheering who also owned brickworks at Bowden. In 1873 the Sheerings leased the works to William Davy (Ruby's grandfather) who later purchased the property in 1976. Davy continued producing bricks until 1883. He then planted the area with orange orchard.

*Brick Kiln
Commercial Rd
1920's*



A much later enterprise was established by Frederick Kuhlmann on the western side of Commercial Road north of Gawler Street (Salisbury Highway) about 1910. This produced bricks until about 1930. The photograph of the kiln, taken about 1920 shows Sam Coleman and George Heidenreich, workers at the kiln.

Many of the buildings in Salisbury were built using the locally manufactured bricks.

Most of the excavations from these brickworks, known as pug holes, remained until the 1940s and were mostly used as rubbish dumps. They have all now disappeared and some have even been built on.

Compiled by D R Brown



*The old Salisbury Home 1900s
East side of North St now southern end of Gawler St*

Wonder if they were built with Salisbury Bricks?

Hooper's House Northern end Ann St now Parabanks





Salisbury Football Team 1899



Salisbury Bowling Club 1952



Salisbury Cricket Club 1910



Salisbury Skid Kids on wet track

*If you wish to see more historical photographs, please refer to our
Flicker account www.flickr.com/photos/sdhsphotos and select the "Album" option*



Salisbury & District Historical Society Inc.

PO Box 838, Salisbury, SA, 5108

*The Salisbury & District Historical Society was established in 1981.
The Society was formed to promote the discussion and study of South Australian
and Australian history, particularly within The District of Salisbury.*

*Other tasks include the collection, recording and classification of works, source
material of all kinds relating to the history of the District of Salisbury and to
facilitate access to the collection by the community.*

SDHS Committee 2022-23

President: Des Brown 0408086545
Vice President: Simon Hales (Acting President)
Secretary: Jennifer Paine
Treasurer: Tanya Paine
Salisbury Council Rep: Shiralee Reardon

Committee Members: Jim & Glenyss Trenorden, Delwyn Ayling, Dennis Wright ,
Alice Foster and Raelene Brown

Editing Team: Jennifer Paine, Lynette Potter, Alice Foster, Tanya Paine, Raelene
and Des Brown

Web-site Mangers: David Murren

Auditor: Anna Gordon

Disclaimer:

Views and opinions expressed in the Salisbury Historical Newsletter do not necessarily reflect the views of the Salisbury and District Historical Society Inc.

While every effort is made to ensure the accuracy of the articles printed, responsibility is not accepted for any errors they may contain that are out of our control.

Web-site: - www.salisburyhistory.com.au

E-mail: - salisburyhistory706@gmail.com

Facebook: - www.facebook.com/SDHS706

Photo Gallery: - www.flickr.com/photos/sdhsphotos/

*Our Newsletter is printed courtesy of the Office of the
Hon Zoe Bettison MP, Member for Ramsay*