

SALISBURY & DISTRICT HISTORICAL SOCIETY INC. NEWSLETTER

Celebrating over 40 years of "keeping alive the history of Salisbury"



MARCH 2024



Salisbury & District Historical Society Inc.
3 Ann St Salisbury

Museum Open— 2pm-4pm on the 1st and 3rd Sundays of the month
Water Wheel Open—2pm-4pm on the 1st and 3rd Sundays of the month
These times may vary due to long weekends and school holidays.
The Museum and Water Wheel visits can be arranged at other times,
please contact the President on 0450191792

*We acknowledging the Kaurna people, the Traditional Owners of the land
on which we live today
We pay our respect to their Elders past, present and emerging*

2024 Program

Saturday, 17th February -9.00am

Museum Clean Up Day

Wednesday, 13th March-7.00pm

Robert Styling -History of
Fire Brigades in Salisbury

Wednesday, 17th April-7.00pm

Roger Frisby-

Central Districts Football Club

Sunday, 21st April- (TBA)

Trip to St Kilda Tram Museum

Lunch at St Kilda Hotel-12noon

Sunday, 5th May-1:30pm

History Walk A-Bookings Essential

Sunday, 19th May-1:30pm

History Walk B-Bookings Essential

Wednesday, 19th June-7.00pm

Bob Samson-

National Railway Museum

Wednesday, 17th July-10:30am

Don Loffler-Early Days of Holden

Followed by lunch at Salisbury Hotel

Wednesday, 28th, August-7.00pm

Alan Starks-Story of Chocolates

Sunday, 8th September-12noon

Picnic on the lawn

Wednesday, 16th October-7.00pm

A.G.M. and Show and Tell

Sunday, 1st December-12:30pm

Christmas Lunch-TBA

Committee Meetings 7.00pm, Thursdays:

1st February, 7th March, 11th April, 13th June, 22nd August, 14th November

Report form the President – Simon Hales

Greetings, as we start another year, I refer you to our 2024 Program as we look forward to an interesting selection of speakers along with some day time events. I hope you will all be able to participate in the societies activities.

It has been decided to trial opening the Folk Museum twice a month to coincide with the water wheel this year. Any more volunteers to help out with this would be greatly appreciated, If you are interested please reach out to myself or one of the committee members. You can see who they are on the back page.

Our annual busy bee was well-attended where a good team of members gathered to give our museum a clean-up. Thank you for everyone who was able to come along.

Already this year we have had several requests from members of the public seeking information relating to Salisbury's history along with some community groups wanting to visit our Museums.

I would like to thank the past committee for their hard work and dedication to the society and I am looking forward to working with the new committee in keeping alive the history of Salisbury.

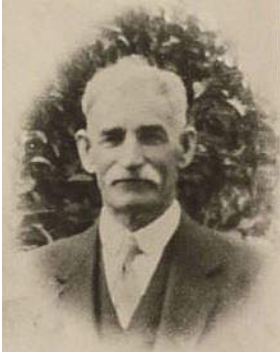
Vale - Heather Cox. *Heather sadly passed away on 12th January 2024 at the Helping Hand Home at Lights View. Both Heather and her late husband Ray, were valued members of the Historical society, serving on the committee for many years and hosting the picnic at their home in Para Street on several occasions. Our deepest sympathy goes to her family. She was 94 years of age.*

Vale – Ian Johnson. *Ian sadly passed away on 27th January 2024 at the age of 85. He and his wife Elizabeth were members of the Historical Society for many years. They lived on Ian's family home (a heritage listed house) on Burton Road. We extend our deepest sympathy to Elizabeth and the family.*

Our History Soc volunteers roster to open the Folk Museum and the Water Wheel Museum on a monthly basis.

If any one would like to become involved in this activity we invite you to contact us on "salisburyhistory706@gmail.com " or the President on 0450191792

Edwin Moss



Edwin Moss was born in 1860 and lived in the vicinity of Salisbury all of his life. He was a councillor for North Ward in the old District Council of Yatala North and a Justice of the Peace. For more than 40 years he was secretary and a senior deacon of the Congregational Church and at one time was superintendent of the Sunday School. Mr Moss started out as a mill boy at the local flour mill. At the age of 22 he was managing the mill and after 11 years he left and started citrus growing. He was a prominent member of the local Citrus Growers' Association and was the secretary up until his death. He married Margaret Raymond and they had five sons. Ray, Harry, Wilfred, Ronald and Colin. The third son (Wilfred) was killed in the Great War. Edwin Moss died on the 9th January 1939.

ARTICLE WRITTEN BY EDWIN MOSS IN "THE SOUTH AUSTRALIAN" ADELAIDE, THURSDAY, AUGUST 12, 1926.

A Picturesque District: Salisbury, apart from having an historic name, is one of the oldest and most interesting of South Australian towns. It is true, as every child will tell you that Salisbury is where oranges come from, and luscious oranges, too. Anyone wanting to know Salisbury – its capabilities in production, its topography, its beauty spots – if rightly directed, would alight from a northward-bound train, get into a friendly car, and proceed westward along the road which leads over the "Happy Home" bridge. This would enable him to see the western part of the township, on his right the old settlement, and on his left, a little farther on, the new residential area, sometimes called "New Salisbury".

The Little Para is crossed by this bridge, and the lower section of the flats, bearing their famed orange groves, are passed through. The view here is satisfying to a lover of nature. The gums, which are seen for miles before reaching the township, and which provide a picturesque setting to it, form a winding belt from the gorge to the sea. Though many trees have been sacrificed to make room for the more profitable orange, they are too much admired by the landowners along the flats for them to eliminate them altogether. And so they stand and hang their curtains of deep green leaves as they have stood – how long? Many people who have lived by, and the allotted span, knew most of the trees in their neighbourhood as old trees when they were boys and girls, and the same trees look on older now than when they were playing in their shade or climbing their branches. These gums appear to have perennial youth.



The dwelling just over the bridge on the right was once the “Happy Home” Hotel, hence the name still clinging to the bridge. Travel westward to the second turning to the left, then continue southward, some of the best dairying land in the district will be seen, where Lucerne thrives without irrigation, and from whence milk flows daily to the city in large volume. In this area will be found some of the choicest breeds of dairy cattle, the Friesian being prominent. Names known in the past and in the present in the neighbourhood are Urlwin, Diment, Quick, Griffiths, Helps, White, McNicol, Burdett, Winzor, Snell, Barton, Woodcock, and Martin. Strike easterly, cross White’s bridge, and the Angas Deaf and Dumb Institution is brought into view. A fine institution, difficult to manage, but kept in splendid order by Mr. and Mrs. A.G.H. Cox. The land from the creek to the railway line is of strong character, and grows lucerne successfully, though much attention is given to hay growing and sheep. Ayles, Short, Wright, Shepherdson, Fidge, Thompson, King, Middleton, Ryan, Mant, Judd, Lutt, Robertson and Hill are names called to mind in this area of past and present generations. Still proceeding east, and just before crossing the railway, the Parafield poultry station is seen, and if one is a poultry enthusiast it will not be passed without inspection, and the time spent there will be well repaid.

Driving over Lawrence’s crossing (where there is now a railway siding) and travelling east for a mile, the Main North Road will be reached, and the “Avenues” the property of Mr. Glen Leggoe, will have been passed through. A few years ago four good farms, mainly devoted to hay growing, now form one estate used for fattening stock, chiefly sheep. Lucerne and peas form the most important crops grown, and these thrive luxuriantly with fair rains, due to the generous dressings of manure applied and the use of a cultivator. Go north for about two miles on the speed inviting bitumen, and from this point of vantage, or higher up the hillside, perhaps, a fine view of Salisbury township and the neighbourhood, as far south as the sinuous line of gum trees will

permit, is unfolded. About 80 years ago this plain, and perhaps the foothills as well, comprised a sheep run owned by the late Mr. Peter Ferguson, who had his head station a little north of the Little Para, and the country was covered with patches of scrub – peppermint and gum – and sheep and cattle tracks were the only roads. It is only a lifetime since then but much has happened, and many changes have come about. Generations have been born, grown to manhood and womanhood, and have gone out to people the earth in many directions, the Peninsular, particularly, having gained some of its best settlers in this way. The gain has not been all on the one side. The land has responded liberally to the well directed efforts of most of those whose family names have been known on these plains from the earliest days of their settlement.

The plains have also been the nursery for many who have since made their homes in parts of New South Wales and Victoria, and the West, so that names which have been household words here may be heard in many parts of our wide continent. Familiar family names in this area are Goodall, McIntyre, Pedlar, O'Leary, Whittlesea, Dunkley, Williams, Harvey, Coker, Frost, Dow, Stewart, Meek, Skipworth, Reid, Bussenschutt, and Heier, and on the north side of the Little Para we think of Goodman, Sampson, Coker, Judd, Ridley, Coleman, O'Loughlin, and O'Leary.



Years ago the staple product of the whole district was wheat; then hay for a long period was about the only crop grown, but with the advent of the abattoirs, cattle and sheep are receiving much more attention, and owing to the proximity of the market, land between Dry Creek and Salisbury township is much sought after. Values have risen about 400 per cent within the last 20 years, and the top does not seem to have been reached yet. Though farther from the abattoirs, land on the north side of the creek has also risen considerably in value.

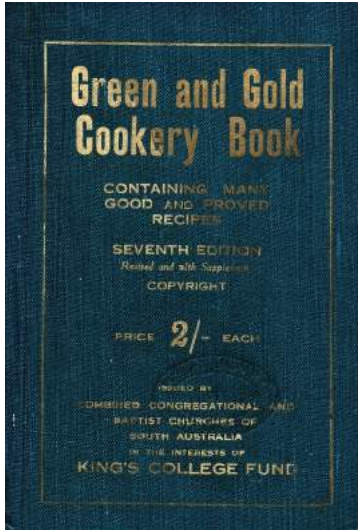
About 77 or 78 years ago the late Mr. John Harvey, with his wife and young family, left the Old Spot Hotel, down there at the bridge spanning the Little Para, and trekked about two miles west, where he had taken up land, and there built the Salisbury Hotel, which still stands as a licensed house. Mr. Harvey held a large area of land in the district.

The hotel was one of the first two or three buildings erected in Salisbury. Mr. Harvey was the founder of Salisbury, and the name which the township bears is that of the birthplace of the late Mrs. Harvey. Names of streets are also associated with the family and the county from which Mrs. Harvey came. The family of Harvey is now very prominently connected with Salisbury and district, Mr. James Harvey being the oldest Salisbury identity. With the exception of the first two or three years Mr. Harvey has lived in the district during his life-span of 83 years, and Mr. John Harvey is only a little younger. The road (now Commercial Street) upon which the hotel was built was used a good deal in the days when the Burra mines were active, by the bullock teams returning to the Burra after delivering their loads at the Port, the Main North Road, near the foot of the hills, being taken for the southward trip with the full load of ore. Perhaps it was the need of a little relaxation by the teamsters (and we are told that they were very numerous) after a very strenuous trip down which led to the opening of so many public houses on this Lower Road through Salisbury and the "Salisbury" was one of five which at one time were open within a distance of a little more than three miles. The 'Lass o' Gowrie' (near the Levels) was the first calling place on the back trip, and then came the Scottish Chief, Coach and Horses, Salisbury and Farmers' Home (on north side of the creek near the flour mill).

The Little Para forms the boundary between the Council districts of Yatala North and Munno Para West, so that residents in the township north of the creek are not in Salisbury township area. In the early days of settlement one council controlled the whole area from Gawler to Enfield or Prospect. The late Mr. John Harvey was Chairman of the first Council formed, and later he was elected as representative of Yatala in the Assembly. The old flour mill was built in 1852 by Messrs. C. Talbot and Minard, and was owned and worked afterwards successfully by William Norman, Verco Bros., W. Norman jnr., and E. Davey and Sons. It was while the last named was in possession that it was destroyed by fire in 1915. Built before the railway was constructed to Salisbury, it proved to be about three quarters of a mile from the station, and was consequently handicapped by the cost of cartage. Mr. T. Heidenreich has built a six-bag mill near the railway station, and in the matter of cartage the expense is cut down to about one fourth what it was at the old site.

The gorge of the Little Para is immediately above the Main North Road at the "Old Spot". It has sometimes been spoken of as a possible site for a reservoir.

THE GREEN AND GOLD COOKERY BOOK



In 1923, Annie Sharman had the idea to produce a cookbook as a fundraiser for Kings College in Kensington. She edited and compiled it but had no idea it would become so popular with so many editions printed.

Members of the school community and the Congregational and Baptist Church community around the State were asked to contribute recipes and any household hints. Almost 200 contributors had their recipes published in that first edition, with their name and suburb recorded under their recipe.

Priced at 2 shillings, 20 cents today, the first 5000 copies sold out within 12 months, raising 250 pounds. A second edition was printed in 1925.

There were numerous cake and biscuit recipes giving us an insight into the eating habits of earlier times. Breakfast dishes including Brains in Batter, Liver and Bacon, Kidney Savoury and Crumbed Sausages. Lunch dishes include egg dishes, Homemade Camp Pie, "Fricassee" of Sheep's Tongues and the Classic South Australian Fritz Sausage. The Meat section includes recipes for Stewed Tripe, Kidneys, curried or stewed and Ox tongues boiled or in jelly. Rabbits' also known as underground mutton was featured repeatedly.

By 1960 there had been 31 editions, with Annie Sharman, occasionally adding extra recipes and tips.

By 1974 the cookbook had generated more than \$15,000 in royalties. That same year Kings College amalgamated with Girton Girls School to form Pembroke School.

The latest current edition was published in 1999 to celebrate the books 75th Anniversary, although it was a year late getting to the printers.

Many dog eared copies would have been found in households all over Australia. Do you have a South Australian icon in a draw or cupboard somewhere?

Happy Belated 100th Birthday to the Green and Gold Cookery Book.

Recipe

Fritz Sausage recipe

One and a half pounds of chuck steak, quarter pound bacon, one and half cupsful (large) of bread crumbs, one teaspoonful of salt, one small teaspoon of pepper, one dessertspoonful of Worcester sauce, pinch of thyme and one egg. Mince the steak and bacon very finely, add bread crumbs and a well beaten egg; mix well together; make into a roll and tie in a floured cloth. Put into boiling water and boil for one and half hours. Turn out and roll in breadcrumbs and serve cold.

Edith F Rutt.

Remedies

CURE FOR SPRAINED ANKLE

One cup of bran. Pour over nearly cup of boiling vinegar, and place right round as a poultice with an air tight cover to keep the heat in.

Mrs N. Miller, Port Pirie

CURE FOR HICCOUGH

One tablespoonful brown sugar moistened with pure vinegar.

M Sharples, Kadina

Recipe and Remedies copied from the seventeenth edition. Printed approx. 1940.

Compiled by Jennifer Paine, from various internet sources.



McIntyre's Bakery

John St 1950s

**Was located opposite
what is now the
Community Hub**



The above photo was taken in the mid 1950s. It is looking due south from the then Memorial Gardens adjacent to the Salisbury Railways station. The large majestic gum tree on the right can still be seen today. In the foreground is the Soldiers War Memorial Monument and in the background is the RSL Hall with Dickson Deli fronting Park Tc. The road on the right of the RSL Hall leads down to the Salisbury Oval where the club rooms, and grandstand can be seen that was opened in 1913. In the 1940s the War Memorial was located between the RSL Hall and the Railway line, know as Memorial Av. On the right a Barwell Bull rail car can be seen nearing the Salisbury Station. These trains serviced South Australia from 1925-1971. On this site before it was used for the RSL and a deli, it was one of Salisbury first garages and petrol stations. The photo below was taken about 1940 and shows K Coker the owner.





Woodman's Garage adjacent to Old Spot Hotel 1930s



*Typical cars in the 1930's
parked along Wiltshire St
Salisbury Primary School in the back ground*

*If you wish to see more historical photographs, please refer to our
Flicker account www.flickr.com/photos/sdhsphotos and select the "Album" option*



Salisbury & District Historical Society Inc.

PO Box 838, Salisbury, SA, 5108

*The Salisbury & District Historical Society was established in 1981.
The Society was formed to promote the discussion and study of South Australian
and Australian history, particularly within The District of Salisbury.*

*Other tasks include the collection, recording and classification of works, source
material of all kinds relating to the history of the District of Salisbury and to
facilitate access to the collection by the community.*

SDHS Committee 2023-24

President: Simon Hales 0450191792

Vice President:

Secretary: Jennifer Paine

Treasurer: Tanya Paine

Salisbury Council Rep: Shiralee Reardon

Committee Members: Terry Sloan, Delwyn Ayling, Dennis Wright, Alice Foster,
Lyn Brooks and Alan Polkinghorne

Editing Team: Jennifer Paine, Lynette Potter, Alice Foster, Tanya Paine, Raelene
and Des Brown

Web-site Mangers: David Murren

Auditor: Anna Gordon

Disclaimer:

Views and opinions expressed in the Salisbury Historical Newsletter do not necessarily reflect the views of the Salisbury and District Historical Society Inc.

While every effort is made to ensure the accuracy of the articles printed, responsibility is not accepted for any errors they may contain that are out of our control.

Web-site: - www.salisburyhistory.com.au

E-mail: - salisburyhistory706@gmail.com

Facebook: - www.facebook.com/SDHS706

Photo Gallery: - www.flickr.com/photos/sdhsphotos/

*Our Newsletter is printed courtesy of the Office of the
Hon Zoe Bettison MP, Member for Ramsay*

We recognise the Kurna Aboriginal People as the Traditional Owners of the Adelaide Plains in South Australia